

Double Ended Beam Load Cell



FEATURES

- Capacities: 5K to 250Klb
- Low profile construction
- Stainless steel construction
- Certified to NTEP class IIIIL, 10,000 divisions
- Sealing: IP67 (DIN 40.050)

OPTIONAL FEATURE

- FM and ATEX certified versions are available for use in potentially explosive atmospheres

DESCRIPTION

The 9103 is a double ended, center loaded shear beam type load cell constructed of stainless steel.

This product is suitable for tank weighing systems, low cost weighbridges and axle weighers.

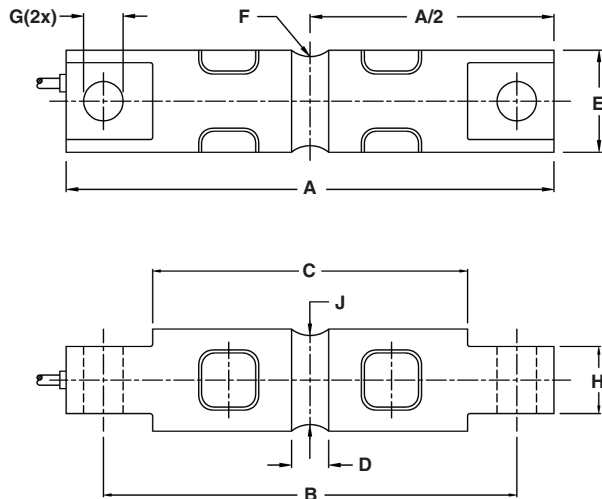
A reliable sealing is ensured by the proprietary TRANSEAL potting compound and additional mechanical protection of the strain gage area.

A specially designed mounting arrangement is available, providing the ideal solution for vessel / tank weighing.

APPLICATIONS

- Platform scales
- On-board weighing
- Weighbridges
- Silo hopper weighing

OUTLINE DIMENSIONS in mm



Cable specifications:

Cable length: 10 meters (6 meters for 5 - 20K)

Excitation + Red
 Excitation - Black
 Output + Green
 Output - White
 Shield Transparent

Cable screen is not connected to the load cell body

Capacity (lbs)	5K, 10K	20K	30 - 60K	100K	150K	200K, 250K
A	206.2	206.2	260.4	285.8	285.8	408.9
B	174.6	174.6	215.9	241.3	241.3	330.2
C	133.1	133.1	165.1	190.5	190.5	254.0
D	15.7	21.3	25.4	31.8	31.8	33.0
E	43.2	49.5	76.2	88.9	99.1	136.5
F	12.7	12.7	25.4	38.1	38.1	50.8
G	16.7	16.7	26.9	26.9	26.9	39.6
H	28.4	28.4	60.2	63.5	71.1	116.8
J	37.6	37.6	69.3	82.3	92.5	131.4



SPECIFICATIONS

PARAMETER	VALUE		UNIT
Standard capacities (E_{max})	5*, 10, 20, 30, 40, 50, 60, 100, 150*, 200*, 250*		Klbs
Metric equivalents	2.3*, 4.5, 9.1, 13.6, 18.2, 22.7, 27.2, 45.4, 68*, 91*, 113*		ton
Accuracy class according to NTEP	NTEP III L	Non-Approved	
Maximum no. of verification intervals (n_{Ic})	10000		
Rated output (=S)	3.0		mV/V
Rated output tolerance	0.03		±mV/V
Zero balance	2.0		±% FSO
Combined error	0.0200	0.1000	±% FSO
Non-repeatability	0.0100	0.0200	±% FSO
Minimum dead load output return	0.0300	0.0500	±% applied load
Creep error (30 minutes)		0.0600	±% applied load
Creep error (20 - 30 minutes)	0.0300	0.0200	±% applied load
Temperature effect on minimum dead load output	0.0008)	(0.0140)	±% FSO/°F (/5°C)
Temperature effect on sensitivity	0.0010	(0.0070)	±% applied load/°F (/5°C)
Minimum dead load	0		% E_{max}
Maximum safe over load	150		% E_{max}
Ultimate over load	300		% E_{max}
Maximum safe side load	100		% E_{max}
Deflection at E_{max}	0.5/ 0.6/ 1.1/ 0.5/ 0.5/ 0.5/ 0.6/ 0.5/ 0.5/ 0.9/ 0.9		mm
Excitation voltage	5 to 12		V
Maximum excitation voltage	15		V
Input resistance	880±80		Ω
Output resistance	700±7		Ω
Insulation resistance	≥5000		MΩ
Compensated temperature range	-10 to +40		°C
Operating temperature range	-40 to +80		°C
Storage temperature range	-40 to +90		°C
Element material (DIN)	Stainless steel		
Sealing (DIN 40.050 / EN60.529)	IP67		
Recommended torque on fixation bolts	12 to 14		N*m

* Capacities 5, 150, 200 and 250 Klbs are not approved by NTEP

FSO-Full Scale Output

VISHAY TRANSDUCERS (VT) SALES OFFICES

VT Americas
 City of Industry, CA
 PH: +1-626-858-8899
 FAX: +1-626-332-3418
 vt.us@vishaymg.com

VT Netherlands
 Breda
 PH: +31-76-548-0700
 FAX: +31-76-541-2854
 vt.nl@vishaymg.com

VMG UK
 Basingstoke
 PH: +44-125-646-2131
 FAX: +44-125-647-1441
 vt.uk@vishaymg.com

VMG Israel
 Netanya
 PH: +972-9-863-8888
 FAX: +972-9-863-8800
 vt.il@vishaymg.com

VMG Germany
 Heilbronn
 PH: +49-7131-3901-260
 FAX: +49-7131-3901-2666
 vt.de@vishaymg.com

VT China
 Tianjin
 PH: +86-22-2835-3503
 FAX: +86-22-2835-7261
 vt.prc@vishaymg.com

VMG France
 Chartres
 PH: +33-2-37-33-31-20
 FAX: +33-2-37-33-31-29
 vt.fr@vishaymg.com

VT Taiwan*
 Taipei
 PH: +886-2-2696-0168
 FAX: +886-2-2696-4965
 vt.roc@vishaymg.com
 *Asia except China



Notice

Specifications of the products displayed herein are subject to change without notice. Vishay Intertechnology, Inc., or anyone on its behalf, assumes no responsibility or liability for any errors or inaccuracies.

Information contained herein is intended to provide a product description only. No license, express or implied, by estoppel or otherwise, to any intellectual property rights is granted by this document. Except as provided in Vishay's terms and conditions of sale for such products, Vishay assumes no liability whatsoever, and disclaims any express or implied warranty, relating to sale and/or use of Vishay products including liability or warranties relating to fitness for a particular purpose, merchantability, or infringement of any patent, copyright, or other intellectual property right.

The products shown herein are not designed for use in medical, life-saving, or life-sustaining applications. Customers using or selling these products for use in such applications do so at their own risk and agree to fully indemnify Vishay for any damages resulting from such improper use or sale.