

Single Ended Beam Load Cell



FEATURES

- Capacities: 200 - 2500lbs
- Low profile, stainless steel construction
- Hermetically sealed, IP66 and IP68
- Certified to OIML R-60, 5000d and NTEP class III, 5000 divisions
- Current calibration output (SC version) ensures easy and accurate parallel connection of multiple load cells
- Interchangeable with existing model 5102

OPTIONAL FEATURE

- ATEX and FM certified versions are available for use in potentially explosive atmospheres

DESCRIPTION

The 9102 is a stainless steel single ended beam type load cell.

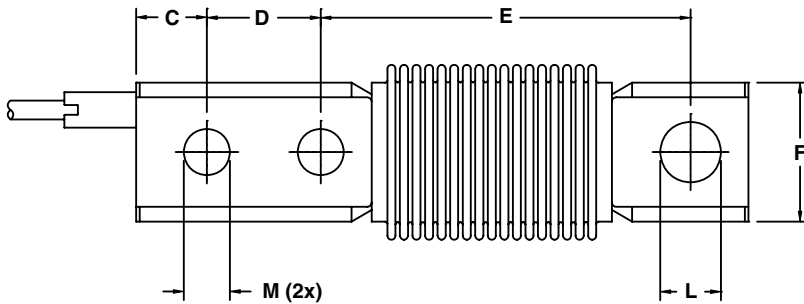
This product is suitable for small and medium platform scales, overhead track scales and process weighing.

The fully welded construction and water block cable entry ensure that this product can be used successfully in harsh environments found in the food, chemical and allied process industries.

APPLICATIONS

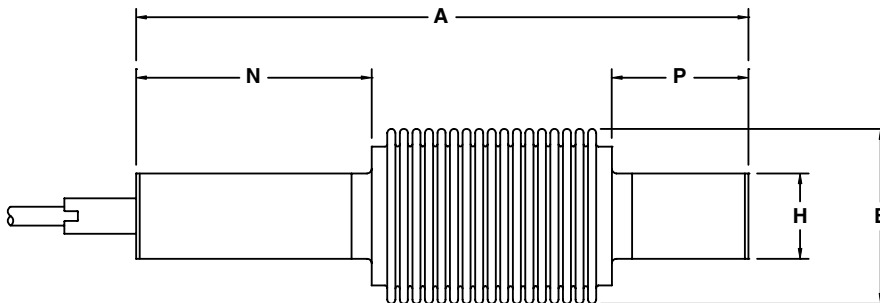
- Platform scales
- Belt scales
- Silo/hopper weighing
- Overhead track scales

OUTLINE DIMENSIONS in millimeters



Capacity (lbs)	200	500-1000	2500
A	127.0	136.7	136.7
B	39.6	39.6	39.6
C	9.7	15.8	15.8
D	15.9	25.4	25.4
E	88.9	82.6	82.6
F	31.2	31.2	31.2
H	19.0	19.0	19.0
L _{THRU}	9.9	10.3	13.5
M _{THRU}	6.8	10.3	10.3
N	38.1	52.6	52.6
P	31.8	30.5	30.5

Note: Dimensions in millimeter



Cable specifications:

Cable length 3m
 Excitation + Red
 Excitation - Black
 Output + Green
 Output - White
 Shield Transparent

Cable screen is not conncted to load cell body. Performance may be affected if load cell cables are shortened.

**SPECIFICATIONS**

PARAMETER	VALUE				UNIT
Standard capacities (=E _{max})	200, 500, 1000, 2500				lbs
Accuracy class according to OIML R-60 / NTEP	NTEP III	Non-Approved	C3	C5	
Max. no. of verification intervals (n)	5000		3000	5000	
Minimum verification interval (V _{min})			E _{max} /15000	E _{max} /15000	
Rated output (=S)	2				mV/V
Rated output tolerance	0.02				±mV/V
Zero balance	1.0				±% FSO
Combined error	0.0200	0.0500	0.0200	0.0100	±% FSO
Non-repeatability	0.0100	0.0200	0.0100	0.0070	±% FSO
Minimum dead load output return	0.0250	0.0500	0.0167	0.0100	±% applied load
Creep error (30 minutes)		0.0600	0.0245	0.0147	±% applied load
Creep error (20-30 minutes)		0.0200	0.0053	0.0032	±% applied load
Temp. effect on min. dead load output	(0.0008)	0.0250	0.0047	0.0047	±% FSO/5°C (°F)
Temp. effect on sensitivity	(0.0010)	0.0250	0.0055	0.0035	±% applied load/5°C (°F)
Minimum dead load	0				%E _{max}
Maximum safe overload	150				%E _{max}
Ultimate overload	300				%E _{max}
Maximum safe side load	100 (50 for 200lbs)				%E _{max}
Deflection at E _{max}	0.2/ 0.2/ 0.8/ 0.8				mm
Excitation voltage	5...12				V
Maximum excitation voltage	15				V
Input resistance	350±3.5				Ω
Output resistance	350±3.5				Ω
Insulation resistance	> 5000				MΩ
Compensated temperature range	-10...+40				°C
Operating temperature range	-40...+80				°C
Storage temperature range	-40...+90				°C
Element material	Stainless steel 1.4542				
Sealing (DIN 40.050 / EN 60.529)	IP66 and IP68				
SC-Version	Standard				
Recommended torque on fixation bolts	80 (70 for 200lbs)				N*m

FSO-Full Scale Output

SC-version: The rated output and the output resistance are balanced in such a way, that the output current is calibrated to within 0.05% of a reference value. This allows easy parallel connection of the load cells.

Correct mounting of the load cells is essential to ensure optimum performance. Further information is available on request.

VISHAY TRANSDUCERS (VT) SALES OFFICES

VT Americas
City of Industry, CA
PH: +1-626-858-8899
FAX: +1-626-332-3418
vt.us@vishaymg.com

VT Netherlands
Breda
PH: +31-76-548-0700
FAX: +31-76-541-2854
vt.nl@vishaymg.com

VMG UK
Basingstoke
PH: +44-125-646-2131
FAX: +44-125-647-1441
vt.uk@vishaymg.com

VMG Israel
Netanya
PH: +972-9-863-8888
FAX: +972-9-863-8800
vt.il@vishaymg.com

VMG Germany
Heilbronn
PH: +49-7131-3901-260
FAX: +49-7131-3901-2666
vt.de@vishaymg.com

VT China
Tianjin
PH: +86-22-2835-3503
FAX: +86-22-2835-7261
vt.prc@vishaymg.com

VMG France
Chartres
PH: +33-2-37-33-31-20
FAX: +33-2-37-33-31-29
vt.fr@vishaymg.com

VT Taiwan*
Taipei
PH: +886-2-2696-0168
FAX: +886-2-2696-4965
vt.roc@vishaymg.com
*Asia except China



Notice

Specifications of the products displayed herein are subject to change without notice. Vishay Intertechnology, Inc., or anyone on its behalf, assumes no responsibility or liability for any errors or inaccuracies.

Information contained herein is intended to provide a product description only. No license, express or implied, by estoppel or otherwise, to any intellectual property rights is granted by this document. Except as provided in Vishay's terms and conditions of sale for such products, Vishay assumes no liability whatsoever, and disclaims any express or implied warranty, relating to sale and/or use of Vishay products including liability or warranties relating to fitness for a particular purpose, merchantability, or infringement of any patent, copyright, or other intellectual property right.

The products shown herein are not designed for use in medical, life-saving, or life-sustaining applications. Customers using or selling these products for use in such applications do so at their own risk and agree to fully indemnify Vishay for any damages resulting from such improper use or sale.